

Guidance

Carry out HGV daily walkaround checks

What you need to check inside and outside of the vehicle when you do a lorry or other HGV walkaround check.

You're responsible for making sure your vehicle is safe to drive.

Carry out a walkaround check of the vehicle before your journey to make sure it's safe. Report any defects in writing to the person in charge of sorting out vehicle defects in your organisation.

The police and Driver and Vehicle Standards Agency (DVSA) officers can stop you to do checks on your vehicles.

You can be stopped from driving until you fix any problems they find, or they can issue you with a fine.

1. Front view (mirrors, cameras, and glass)

Check that no objects get in the way of your front view.

As a general rule, there should be nothing in the swept area of the windscreen wipers.

Some official stickers and road safety items are allowed, as long as they do not seriously block your view of the road, for example, operator licence disc.

Mirrors, cameras and glass

Check that the windscreen is not:

- cracked
- scratched
- discoloured

Check that the windscreen and front side windows are not excessively tinted.

Check that all mirrors are in place and not:

- damaged or missing glass
- obscured
- insecure

If a camera system is used instead of a mirror, check that it works and the view is correct.

2. Windscreen wipers and washers

Make sure the windscreen wipers work. Check that they are not:

- missing
- damaged or worn

Make sure the windscreen washer is working.

3. Dashboard warning lights and gauges

Check that all of these are working correctly:

- instruments
- gauges
- warning lights - including the engine warning, emissions system, anti-lock braking system (ABS) and electronic braking system (EBS)

4. Steering

Check that the steering wheel:

- moves properly and that the power-assisted steering works correctly has no
- excessive play
- does not jam

Check that there's no excessive lift or movement in the steering column.

5. Horn

Check that the horn works and is easily accessible from the driver's seat.

6. Brakes and air build-up

Check that:

- the air builds up correctly and warning system works
- there are no air leaks
- the footwell is clear
- the service brake operates both the tractor and trailer brakes
- the parking brake for the tractor works
- the service brake pedal does not have excessive side play or missing, loose or incomplete anti-slip tread

7. Height marker

Check the correct vehicle height is displayed on the vehicle height marker in the cab.

Remember, the height can change, for example, when the fifth wheel is adjusted, or if the trailer is loaded, unloaded or reloaded.

8. Seatbelts

Check that seatbelts:

- do not have any cuts, damage or fraying that may stop them from working
- stay secure when you plug them in
- retract against you when fitted, and fully retract when you take them off

9. Security and condition of cab, doors and steps

Check that:

- cab mountings and tilt devices are secure
- body panels are secure and not likely to fall off
- all doors operate as required and secure when closed
- steps are secure and safe to use

Check outside the vehicle

10. Lights and indicators

Check that:

- all lights and indicators work correctly
- all lenses are fitted, clean and the right colour
- stop lamps come on when you apply the service brake and go out when you release it
- marker lights are fitted and work

11. Fuel and oil leaks

Check that the fuel filler cap is fitted correctly.

Turn on the engine and check underneath the vehicle for any fuel or oil leaks.

12. Security of body and wings

Check that:

- all fastening devices work
- cab doors and trailer doors are secure when closed
- body panels on tractor or trailer are secure and not likely to fall off
- landing legs (if fitted) are secure and not likely to fall off while driving
- sideguards and rear under-run guards are fitted if required, and that they're not insecure or damaged

13. Battery security and conditions

Check that your battery is:

- secure
- in good condition
- not leaking

14. Diesel exhaust fluid (AdBlue)

Check that your diesel vehicle has enough AdBlue diesel exhaust fluid and top up if necessary.

15. Excessive engine exhaust smoke

Check that the exhaust does not emit an excessive amount of smoke.

16. High voltage emergency cut-off switch

Check that:

- you know where the high voltage emergency cut-off switch is located
- the high voltage emergency cut off switch operates correctly
- all high voltage electrical components are secure and not damaged

17. Alternative fuel systems and isolation

Check that:

- you know where the fuel isolation switch is located
- there are no leaks from the system
- all visible components are in good condition

18. Spray suppression

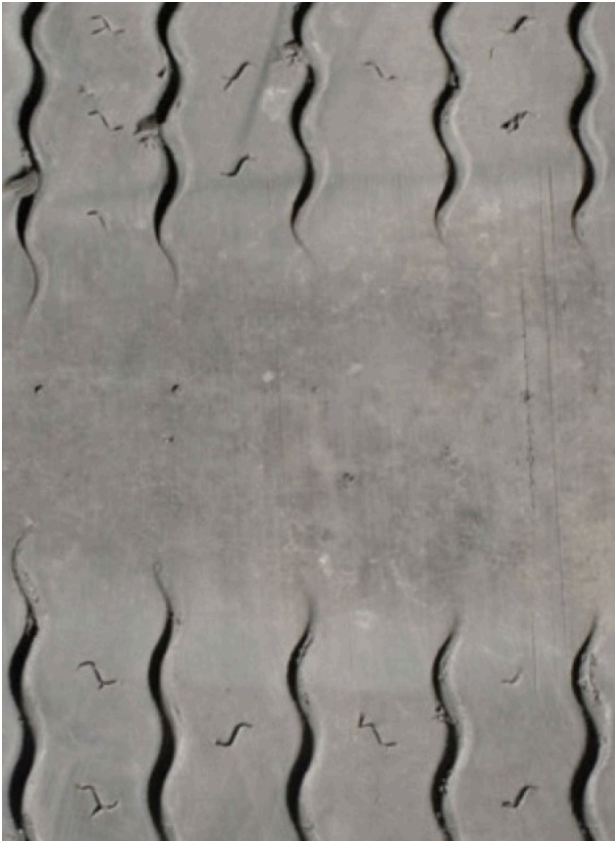
If spray suppression flaps are required, check that they are:

- fitted
- secure
- not damaged
- not clogged with mud or debris

19. Tyres and wheel fixing

Check that:

- the tyres and wheels are secure
- the tyres have a tread depth of at least 1mm
- the tyres are inflated correctly
- there are no deep cuts in the tyre's sidewall
- there is no cord visible anywhere on the tyre
- all wheel nuts are tight enough - you can check if wheel nut indicators (if fitted) have moved to do this
- there are no objects or debris trapped between the twin wheels



Left: example of a gap in the tyre's tread where the tread depth is less than 1mm. Right: example of visible tyre cord on the side of a tyre.



Left: example of a lump in the side of the tyre. Right: example of tyre tread separation.

20. Brake lines and trailer parking brake

Check that:

- couplings are free from debris and are in the right place
- there are no leaks
- there is no damage or wear to the brake lines
- the parking brake for the trailer works

After the initial brake test, leave the engine running so pressure can build up. This will make it easier to hear any leaks as you carry out the rest of the walkaround check.

21. Electrical connections

Check each connection and make sure that all:

- visible wiring is insulated
- visible wiring is not likely to get caught or damaged
- all electrical trailer couplings are connected securely
- all electrical switches work correctly

22. Coupling security

Check that your vehicle is securely attached to your trailer and that the:

- trailer is located correctly in the fifth wheel or coupling
- secondary locking devices are in the correct position

23. Security of load

Check that the load does not move and is not likely to move.

Make sure you use the right type of load securing system for the load.

If you're not happy with how the load is secured or how stable it is, ask the person in charge of vehicle safety to:

- get a competent person to assess it
- reload or resecure it if necessary

24. Number plate

Check that the number plate is not:

- broken or incomplete
- incorrect or spaced incorrectly
- dirty
- faded
- covered over by anything

25. Reflectors

Check that the reflectors (including side reflectors) are not:

- missing
- broken
- insecure
- fitted incorrectly
- the wrong colour
- obscured by dirt or other objects

26. Markings and warning plates

Check that the vehicle's markings (including conspicuity markings) are:

- the right colour
 - visible
 - securely fastened
 - not obscured by dirt or other objects
-
- show the correct information for the load
 - visible
 - securely fastened
 - not obscured by dirt or other objects

27. Other equipment

You might need to check other items specific to the vehicle, for example, loading or specialised equipment.

Record and report the result of your check

Record and report all defects that you:

- find during the daily walkaround check
- become aware of during your journey

What to record

Record:

- the vehicle registration (number plate) or identification mark
- the date
- details of the defects or symptoms
- your assessment of the defects (for example, 'dangerous')
- your name
- who it was reported to

DVSA can ask for a record of your walkaround check at a roadside check.